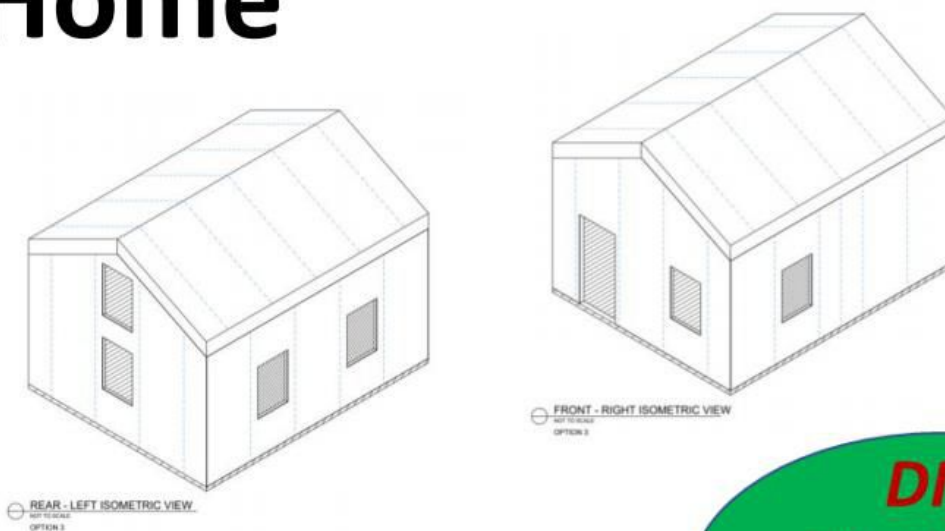


MINHome



Our most compact, cost-effective model:

- 320 sf exterior footprint, 275 sf ground level plus 96 sf loft area = 371 sf interior space
- 16 x 20' footprint, 14' to roof peak*
- 8' x 12' sleeping loft with ladder access*
- 5 x 12' bathroom under loft
- Rooftop solar option
- Customizable interior and exterior finishes

May be used as an Accessory Dwelling Unit (ADU) with optional kitchen package.* Good size for small cabin, bunkhouse, backyard office.

Patented Enercept SIP System with Thermal Post (Structural Insulated Panel) construction: 6.5" R-26 walls, 12" R-54 roof. Typically achieves 60% energy savings as compared to conventional stud framing. Subject to mechanical equipment and windows, likely qualifies as an Energy Star Certified home.

YardHomes Turnkey Installation Service in MN, or DIY Shell Kit and Window Kit shipped nationally.*

- Confirm complies with zoning and building codes in your jurisdiction.

MINHome

Potential interior layout option with 8' x 12' loft above bathroom. Shown with optional wall kitchen.

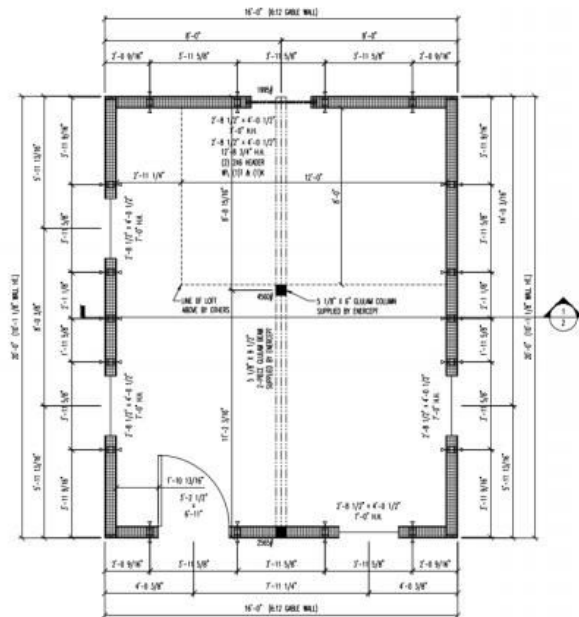


YardHomes Turnkey Installation includes 5 x 12' bathroom with sleeping loft above and:

- LVT plank flooring over insulated reinforced concrete slab foundation
- Drywall or tongue and groove (vertical or horizontal) wall finish
- Fiberglass tub / shower surround, toilet, vanity with sink & faucet
- LP Smartsiding® exterior siding
- Timberline® roof shingles
- Daikin Aurora® ductless mini-split* heating & cooling system
- Renewaire® energy recovery ventilator with bath fan functions*
- GE® tankless electric water
- Energy Star Certified vinyl windows

8-12' wall kitchen packages available.

Energy Star certified vinyl double-pane window & door package available to match factory openings.



- Mechanical equipment subject to change; brand names and trademarks are of the respective companies.